

9inch All-in-One Android Touch Display

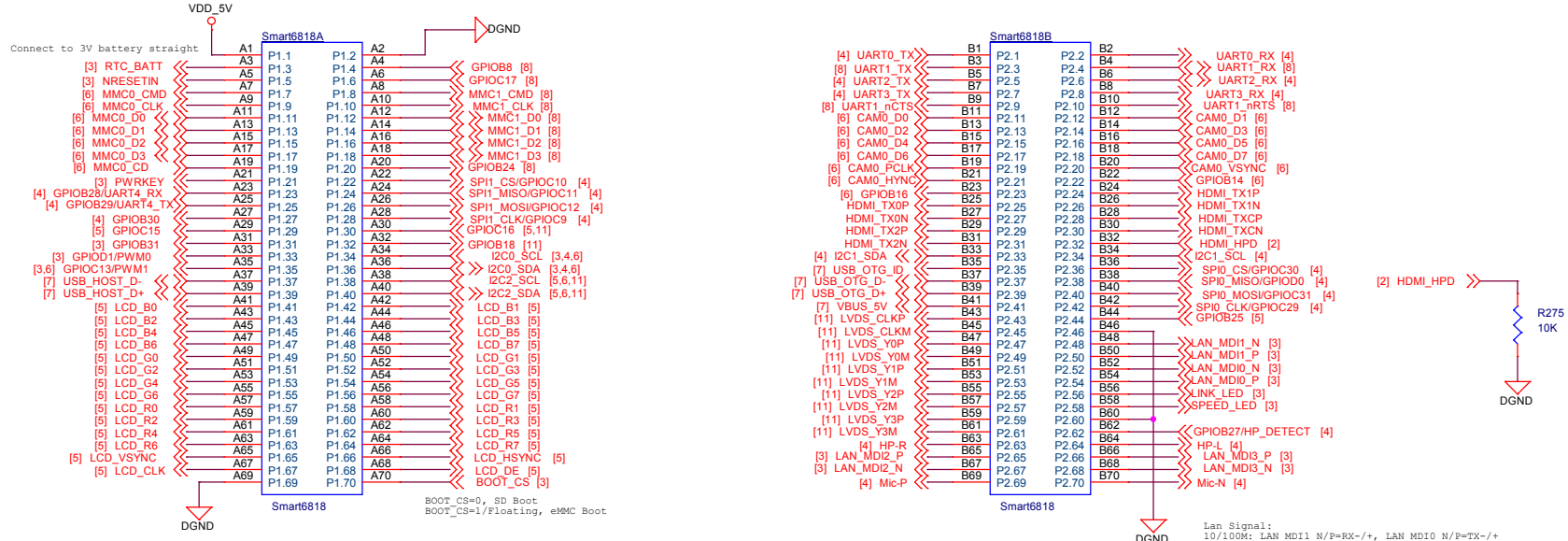
Revision

1901, First Version

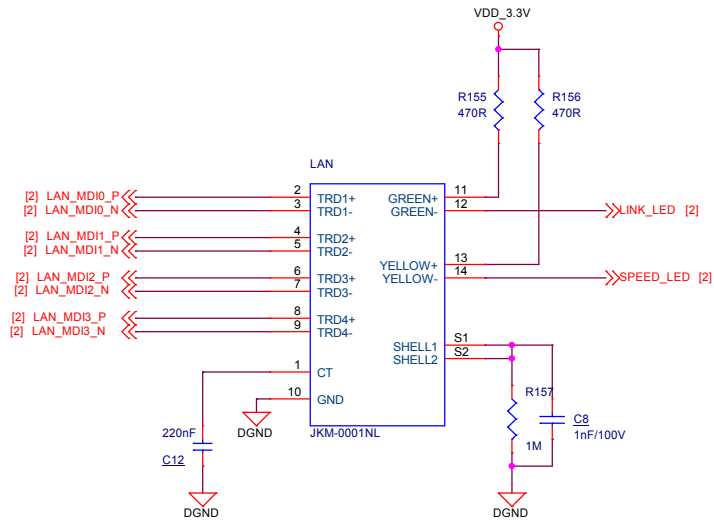


9inch All-in-One Android Touch Display		
Size A3	Document Number 01:Title	Rev v1.0 1901
Date: Wednesday, April 17, 2019	Sheet 1	of 12

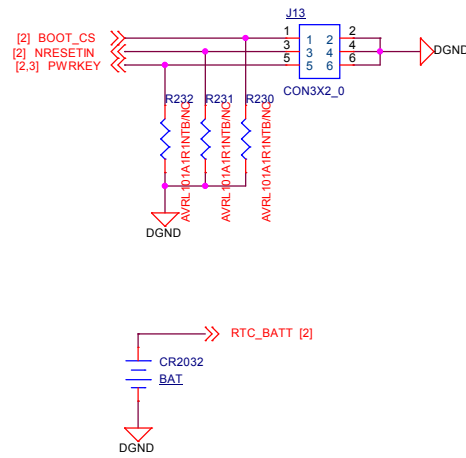
Smart6818 Connectors



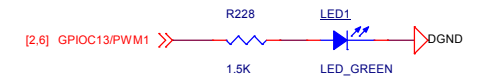
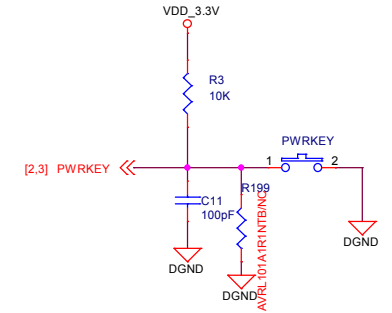
Gigabit Ethernet



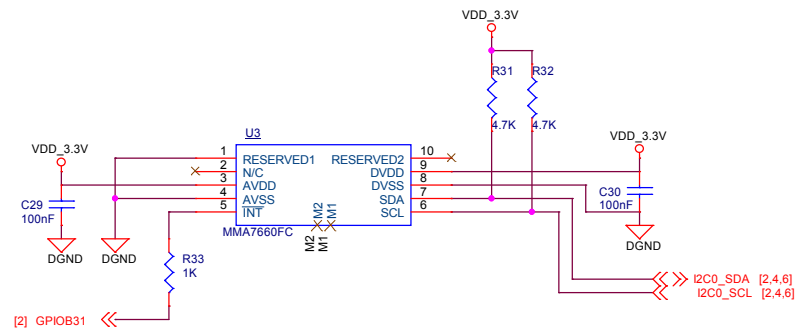
RTC BAT/Boot Switch/Reset



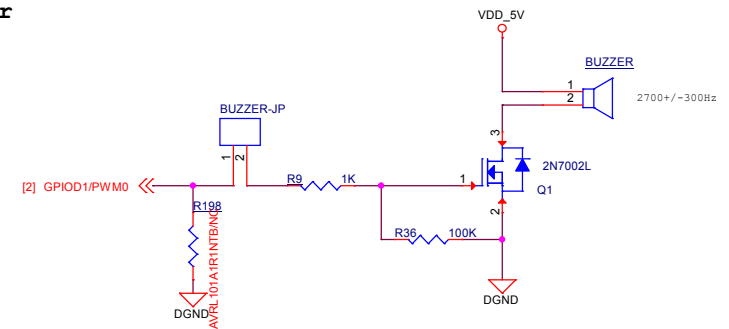
PWRKEY



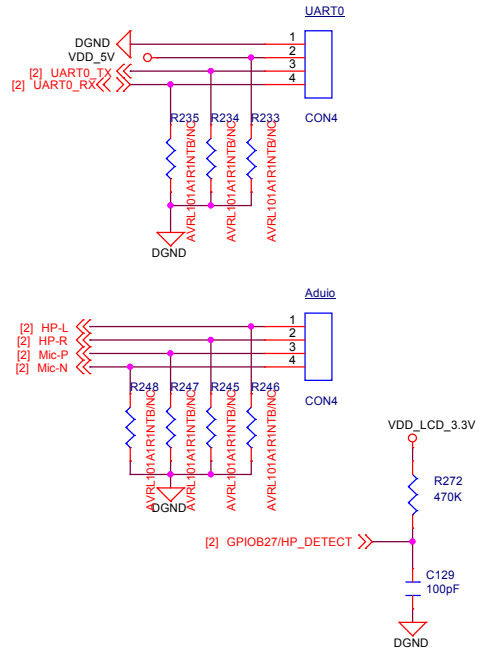
3-Axis Sensor



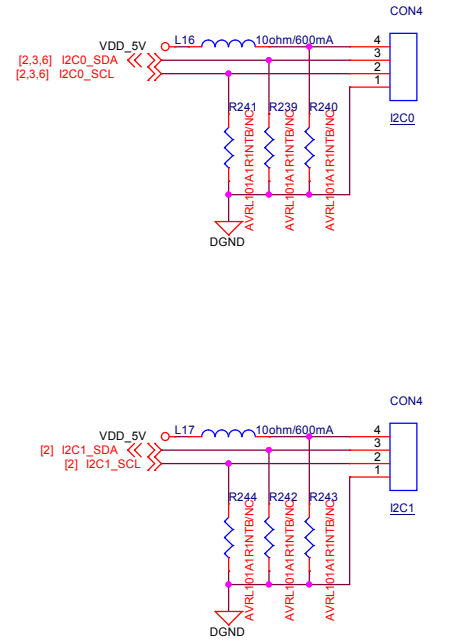
Buzzer



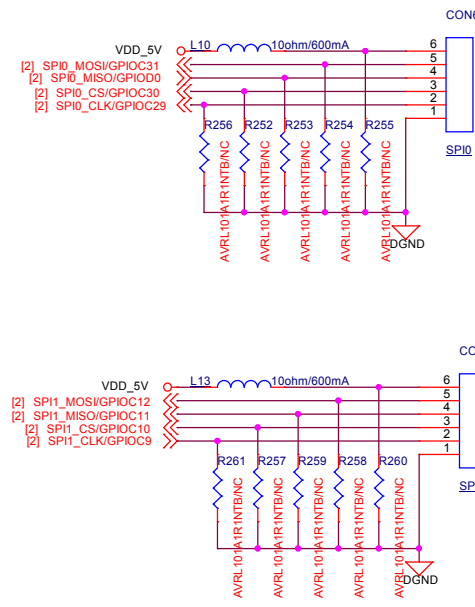
UART Connector (2.0mm 4pin Header)



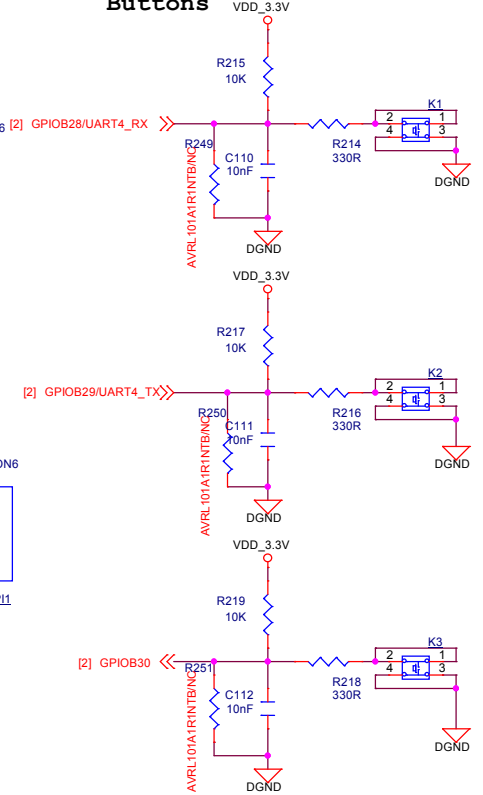
I2C



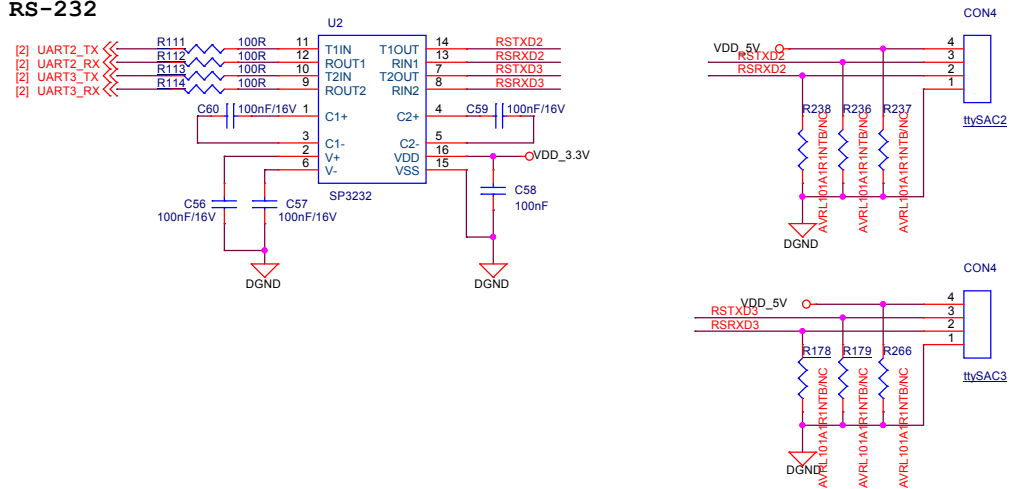
SPI



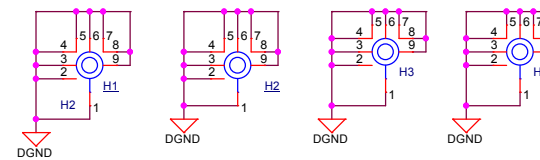
Buttons



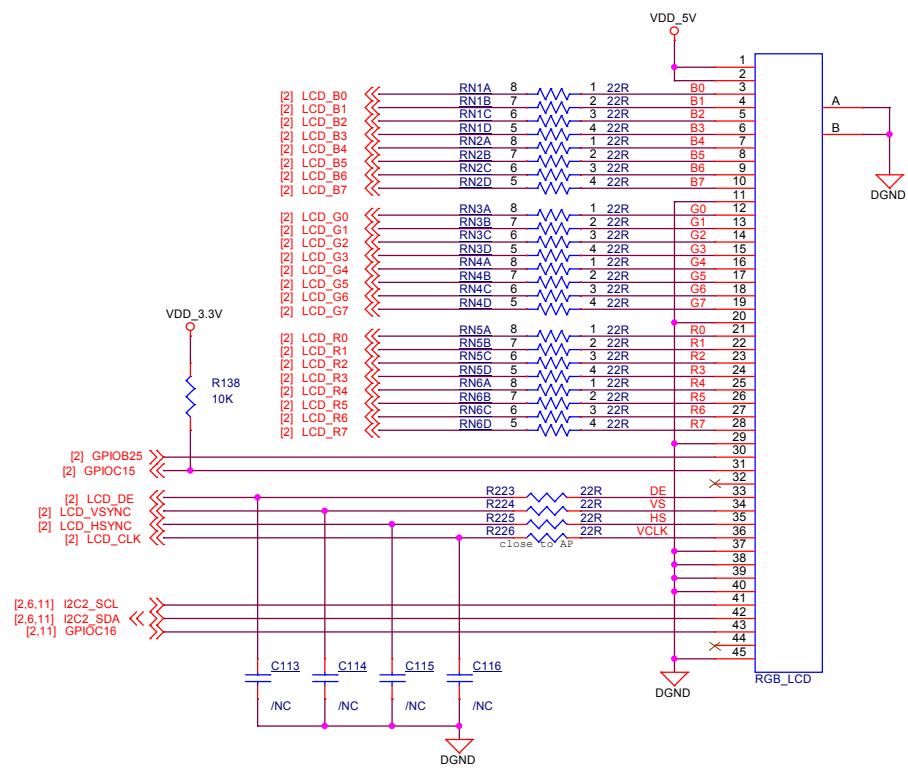
RS-232



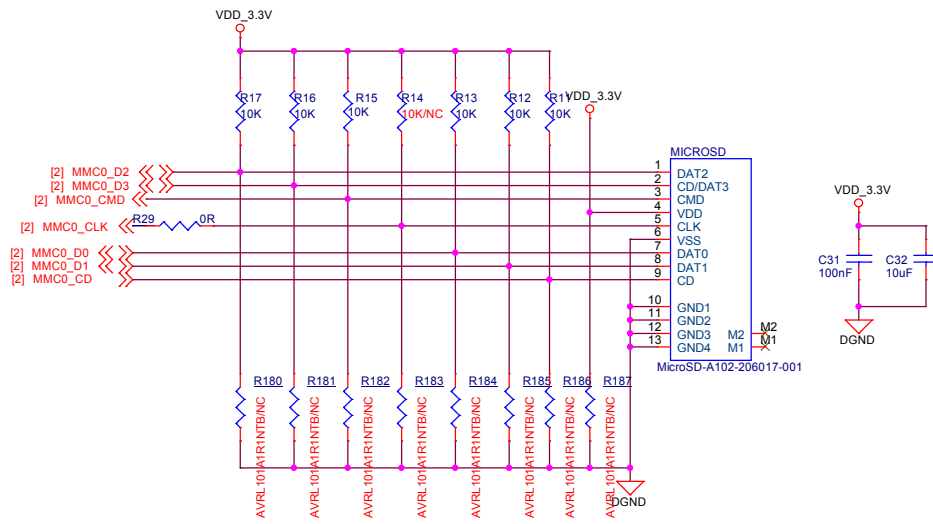
Mounting Holes



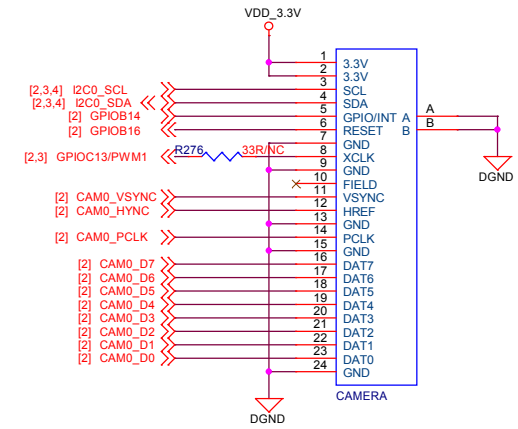
RGB LCD



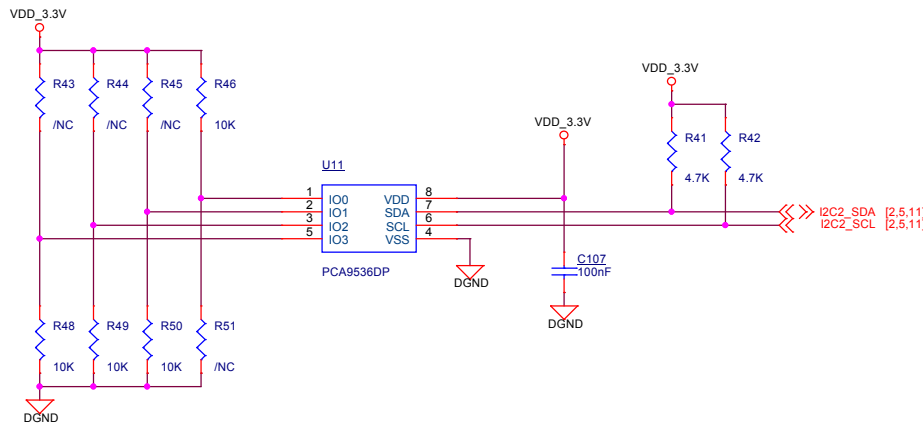
SD Card



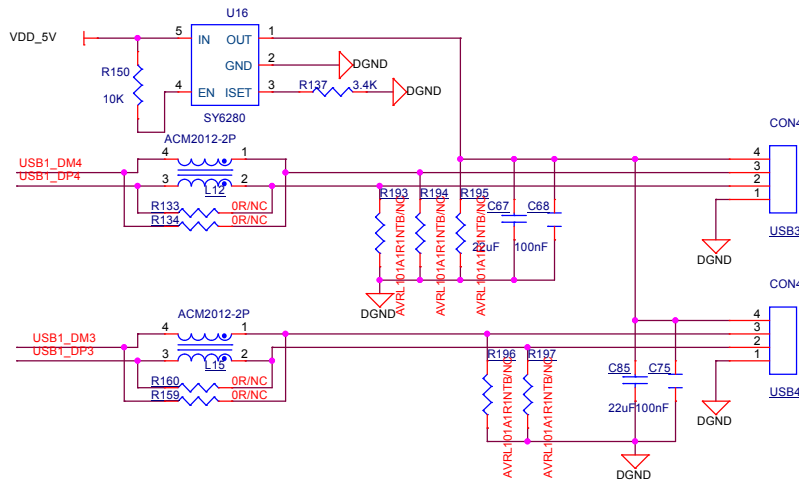
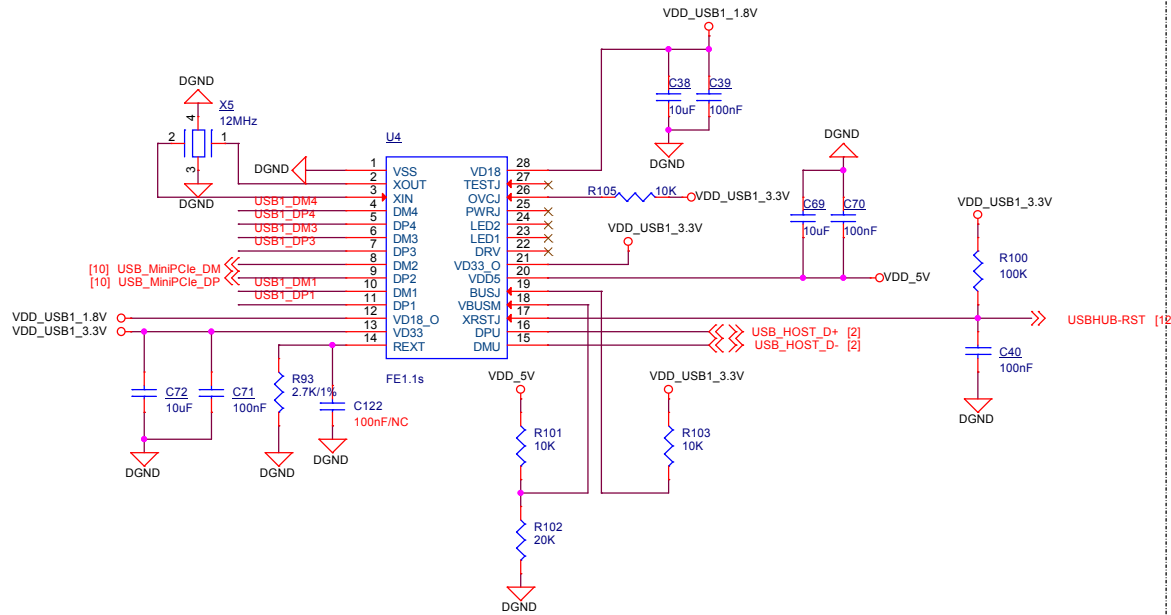
DVP Camera



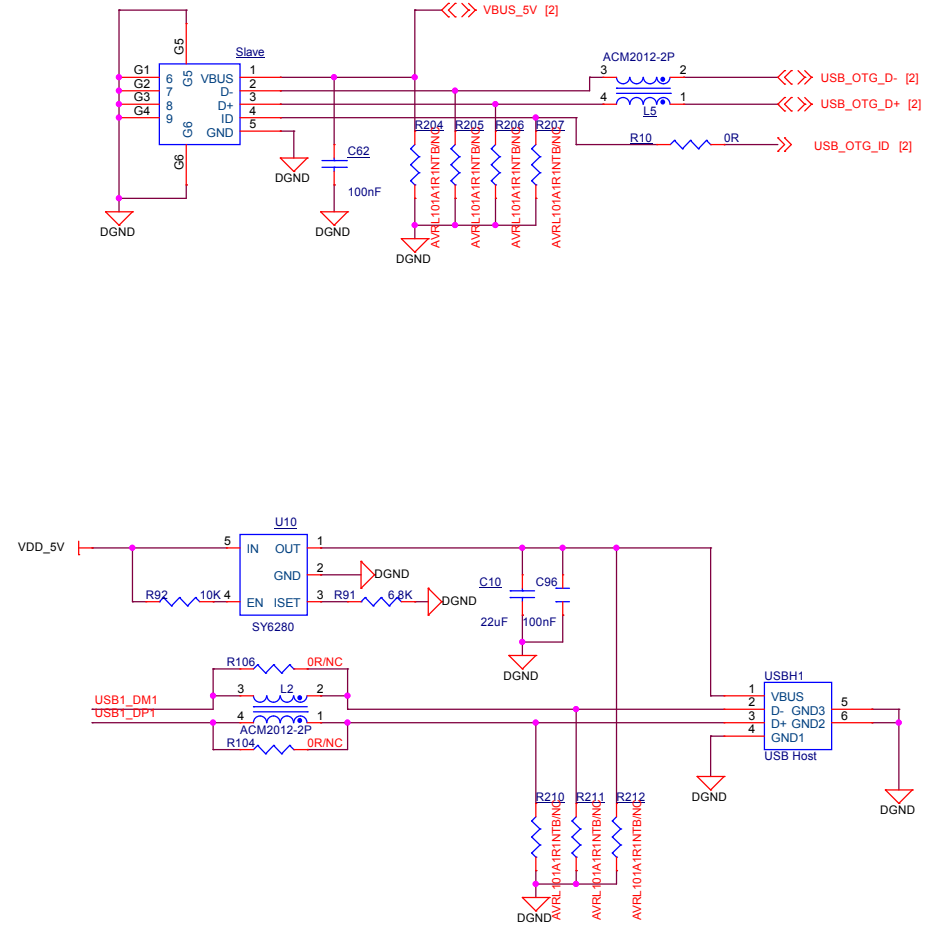
Board Revision



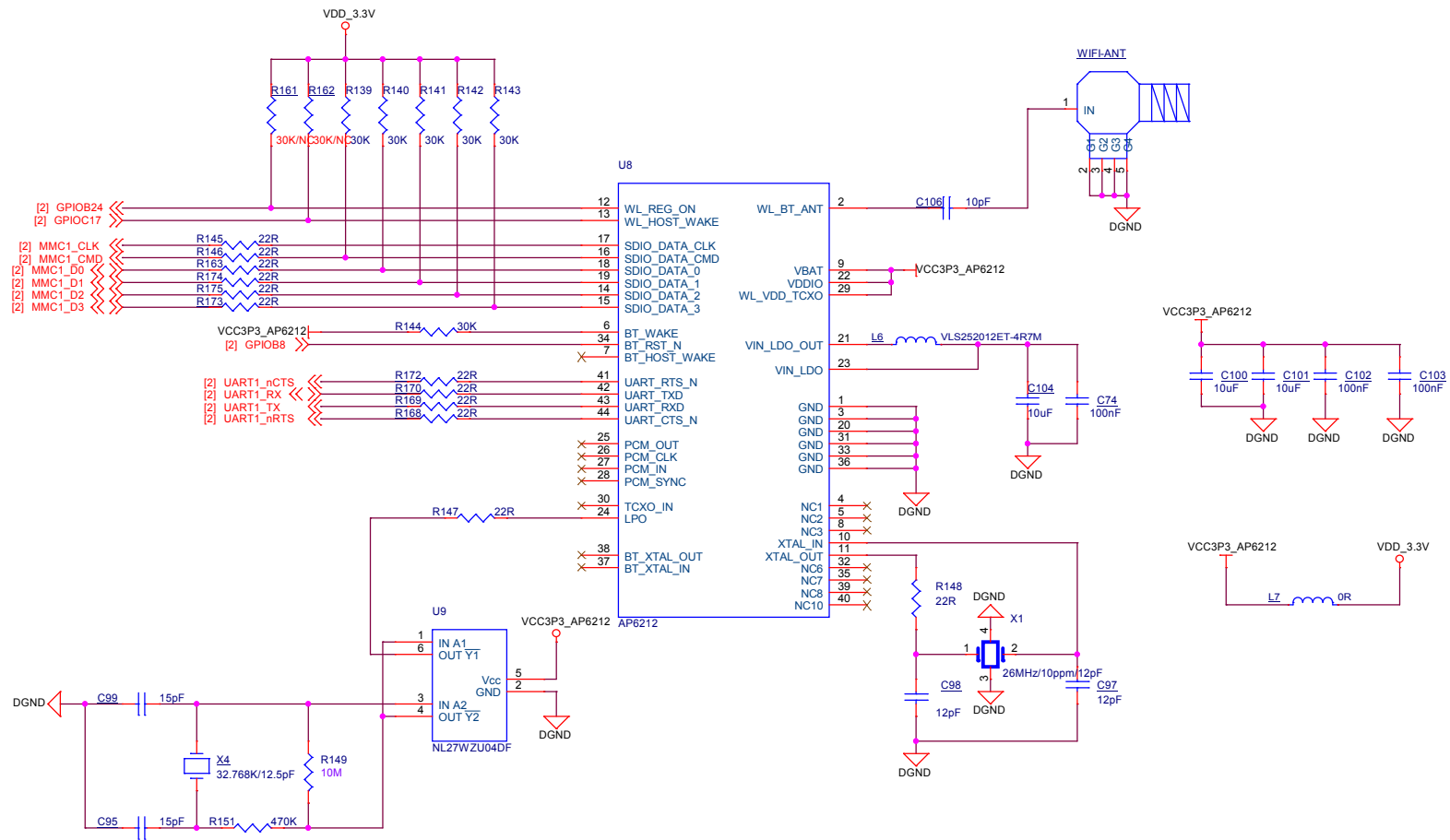
USB 2.0 Host



USB 2.0 Slave

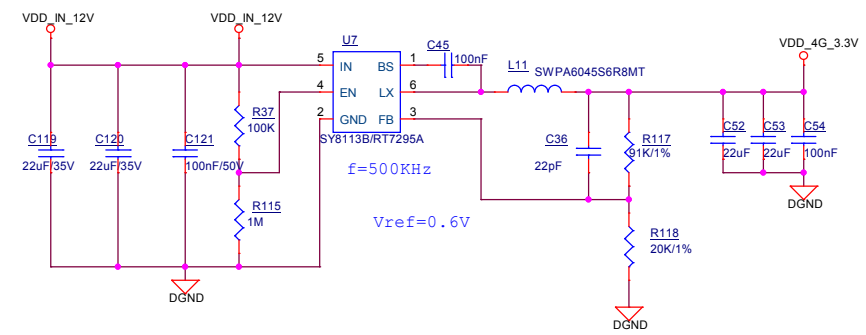
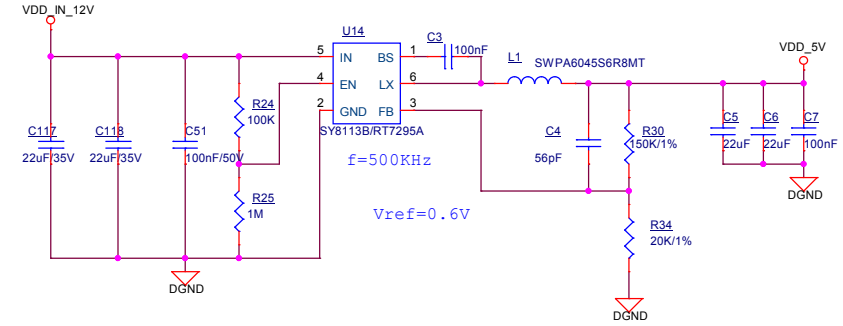
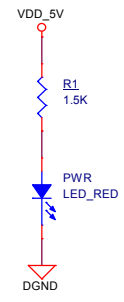
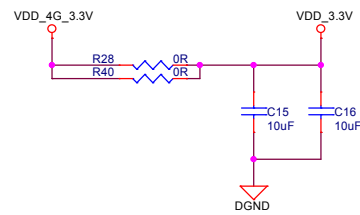
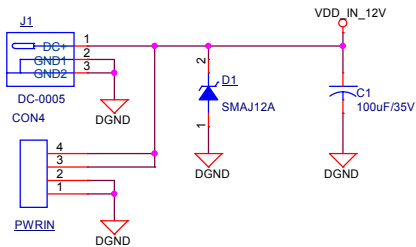


Wi-Fi/Bluetooth



Power

DC 12V IN



MiniPCIE for 4G Module

